



# **Oregon City-West Linn Pedestrian and Bicycle Bridge Concept Plan**

Project Advisory Committee #1

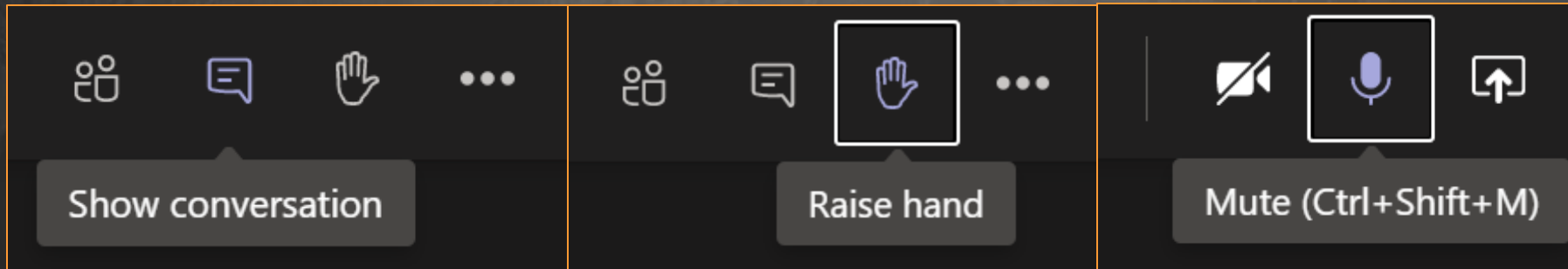
January 27, 2021

# Welcome to Oregon City-West Linn Ped/Bike Bridge Concept Plan Project Advisory Committee (PAC) #1

To maximize our time together, we will follow the protocols below.

▶ PAC & PLT Members

- Use “Raise Hand” Feature to speak
- Keep yourself on mute to minimize background noise
- Provide comments/questions in the chat bar during the meeting



▶ Public Attendees

- Please provide any comments/questions in the chat bar during the meeting
- Public comment period at end of meeting

# Agenda

- ▶ Welcome & Introductions
- ▶ Historical Context
- ▶ Project Background
- ▶ PAC Purpose
- ▶ Review Draft Public Involvement Communication Plan
- ▶ Review Draft Purpose & Need
- ▶ Review Evaluation Criteria
- ▶ Initial Crossing Alignment Considerations & Feedback Request
- ▶ Public Comment
- ▶ Next Steps and PAC Meeting #2 Objective

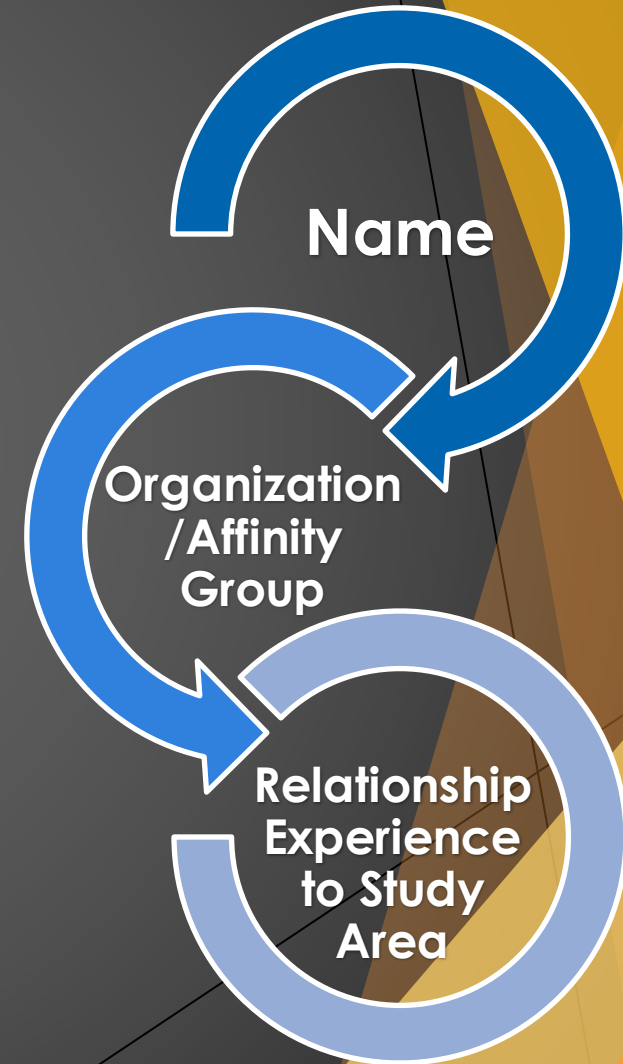
# Team Member Introductions

- ▶ Project Leadership Team
- ▶ Project Management Team
  - Sandra Hikari, Project Manager – ODOT
  - Roy Watters, Archaeologist & Tribal Liaison – ODOT
  - Robert Hadlow, Historian – ODOT
- ▶ Consultant team
  - Marc Butorac, Project Manager – Kittelson
  - Nick Gross, Planner - Kittelson
  - Stacy Thomas, Public Involvement - HDR
  - Quincy Brown, Diversity, Equity, Inclusion, and Access – We All Rise

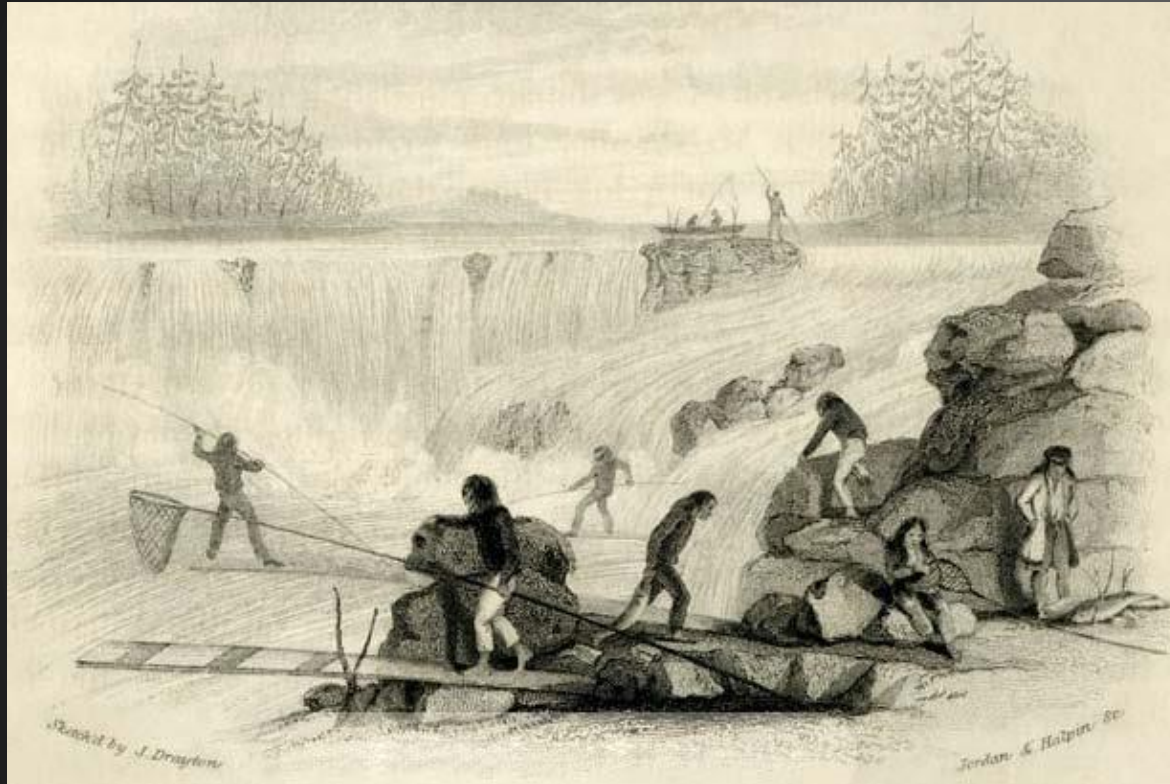
# PAC Member Introductions

- ▶ Abe Moland
- ▶ Andrew Mason
- ▶ Ashton Simpson
- ▶ Benny Dean
- ▶ Brian Moore
- ▶ Dan Marsh
- ▶ Eric Underwood
- ▶ Gregg Kiona
- ▶ Kate Buehrig
- ▶ Kurt Roedel
- ▶ Nancy Kraushaar
- ▶ Neil de Gelder
- ▶ Pamela Barlow-Lind
- ▶ Ryan Webb
- ▶ Shannon Wheeler
- ▶ Victoria Meinig

## Introduction Prompts

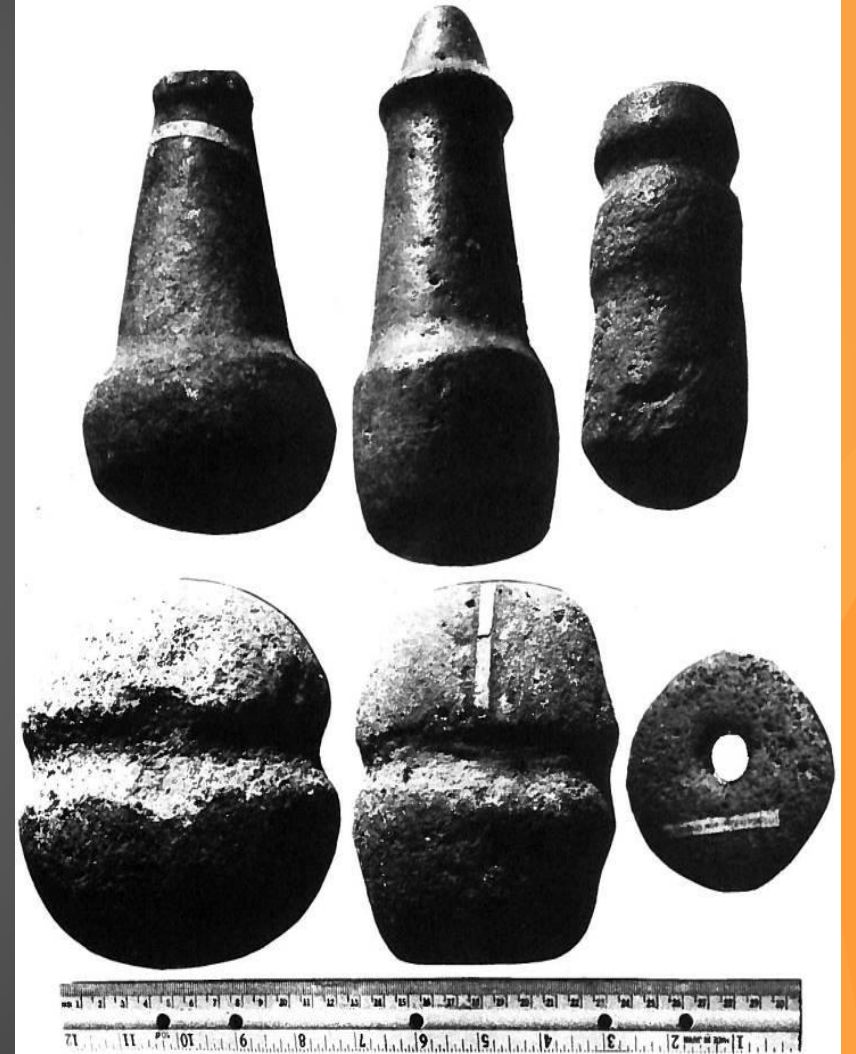


# Tribal People Present Since Time Immemorial

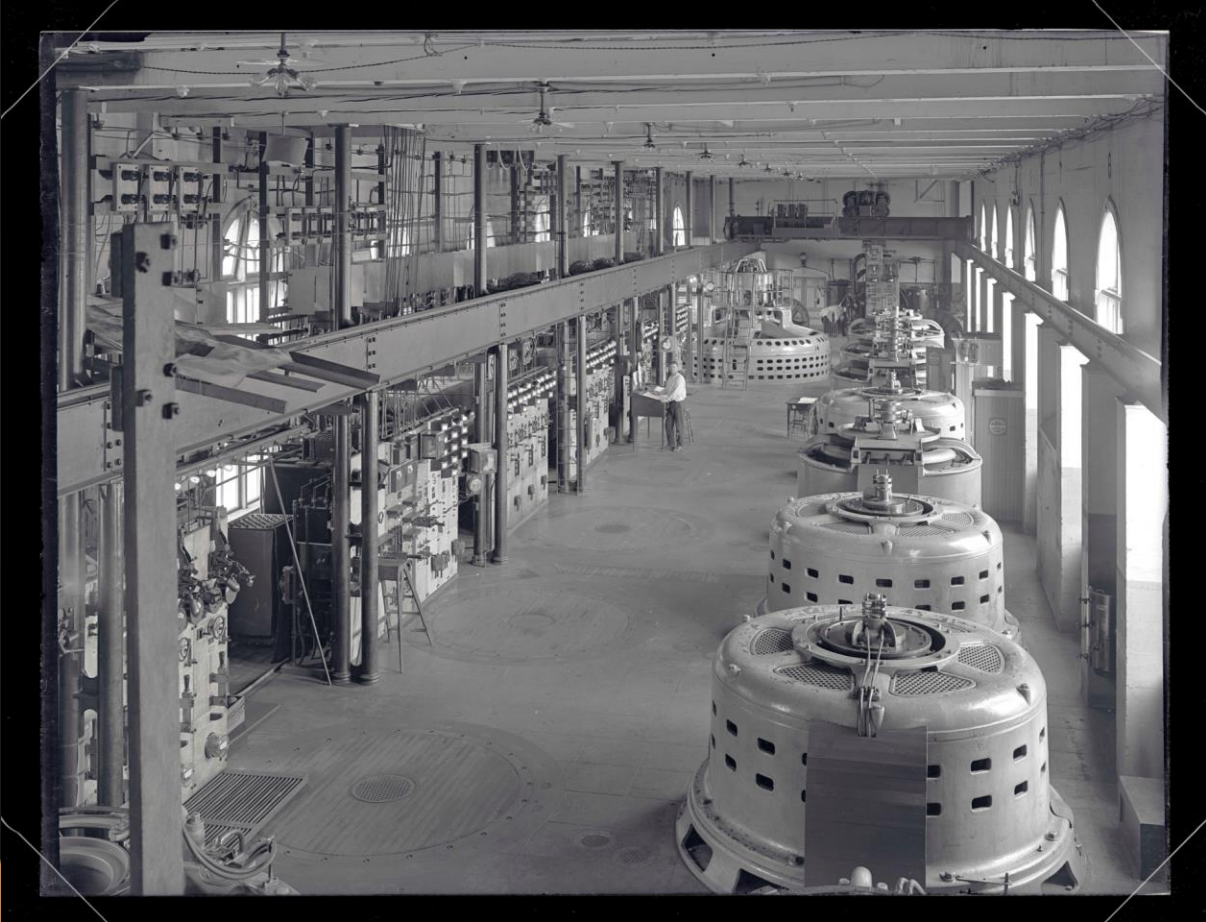


Joseph Drayton (Wilkes Expedition) sketches of Native fishers, ca. 1841

# Tribal Cultural Landscape



# Power Generation History





# Historic Arch Bridge



Looking upriver at the Willamette River Bridge at Oregon City, which opened in 1888.



Towers of old suspension bridge used in construction of the Willamette River (Oregon City) Bridge in 1921-22.

# Historic Arch Bridge



Willamette River (Oregon City) Bridge shortly after dedication in December 1922.



Photo showing temporary bridge upstream of the new Willamette River (Oregon City) Bridge shortly before being dismantled in 1923.

# Diversity, Equity, Inclusion and Access (DEIA) Today and it's Evolution

- ▶ Women's Suffrage Movement
- ▶ Brown v Board
- ▶ Civil Rights Era of 60's
- ▶ Title IX and Title VI
- ▶ Americans with Disabilities Act (ADA)
- ▶ Historical Redress in Modern times
  - ODOT Strategic Action Plan

# Project Background

INDUSTRIAL  
HERITAGE  
DISTRICT

OLD CITY HALL  
DISTRICT

WILLAMETTE FALLS  
DOWNTOWN DISTRICT





**OR 43 Multimodal  
Safety Project**

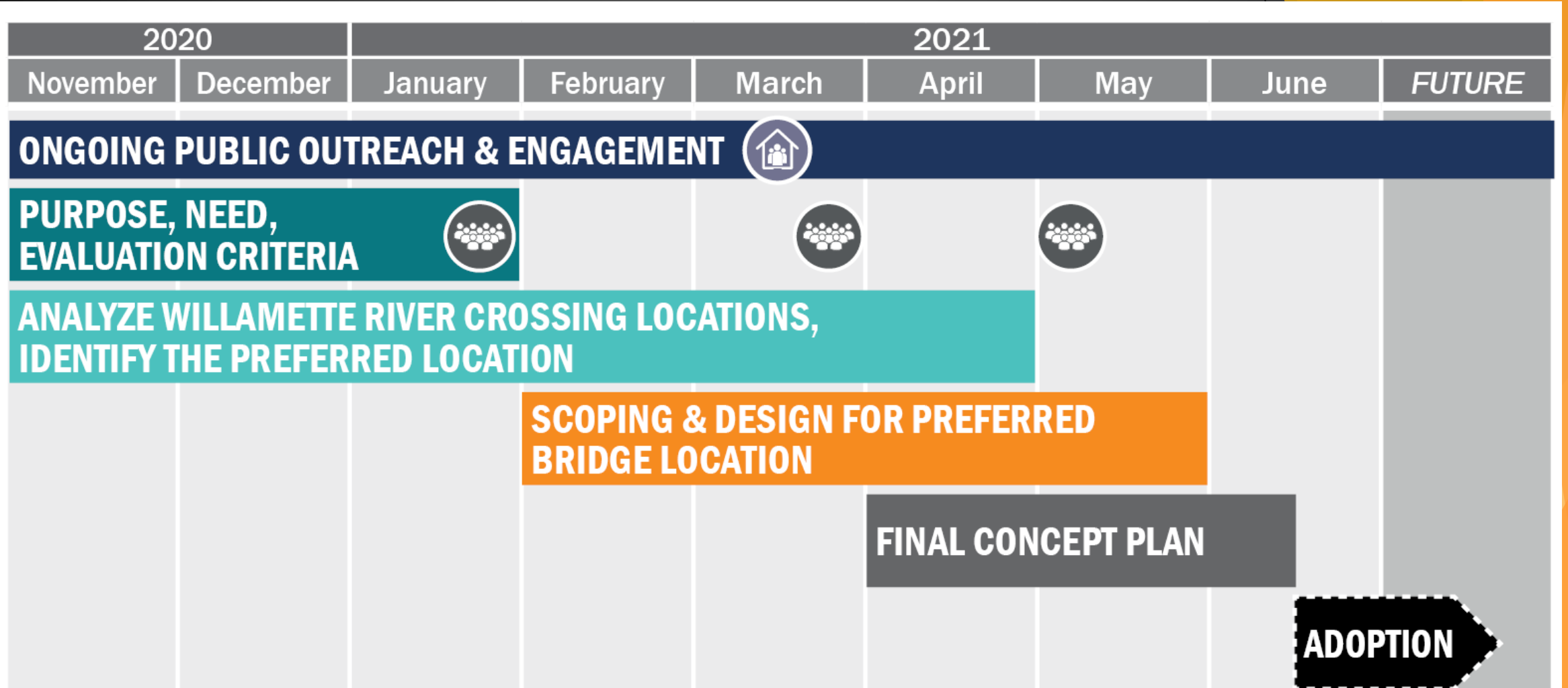
**I-205 Improvements  
(OR213 to Stafford Rd)**

**I-5/I-205  
Tolling  
Project**

**Willamette  
Falls Drive**

**Planned Transportation Improvements  
& Envisioned Redevelopment**

# Project Schedule



KEY:  Project Advisory Meetings

 Public Open House

# Project Process

Develop  
**Site Evaluation Criteria**

Identify **Preliminary Set of Alignments** (ongoing)

Identify **Top 5 Potential Crossing Alignments**

Identify **Preferred Crossing Alignment**



**We Are Here**

# Diversity, Equity, Inclusion and Access Process

- ▶ Applying a **Social Equity Engagement Framework** implementing the 2021-2023 ODOT Strategic Action Plan
- ▶ DEIA Nexus
- ▶ Our focuses for the process includes the following sub sections:
  - Enhance Accessibility and Cultural Experience of the Historic Willamette Falls
  - Create Opportunities for Economic and Community Development
  - Mitigate Environmental Externalities



# Diversity, Equity, Inclusion and Access Approach

- ▶ PAC development and Stakeholder Outreach
- ▶ DEIA Assessment Process
  - PAC formation
  - Public Involvement Plan Development
  - PAC Meeting DEIA topical presentation/assessment feedback
  - Project DEIA Assessment Summary

# Project Advisory Committee Purpose

- ▶ Roles and Responsibilities
  - Review and provide input into the development of the Concept Plan (Purpose and need, evaluation criteria, etc.)
  - Members: Governments with regulatory authority, interested government parties, shoreline property owners and community representatives

# Project Committee Structure



# Project Partners and Management Team

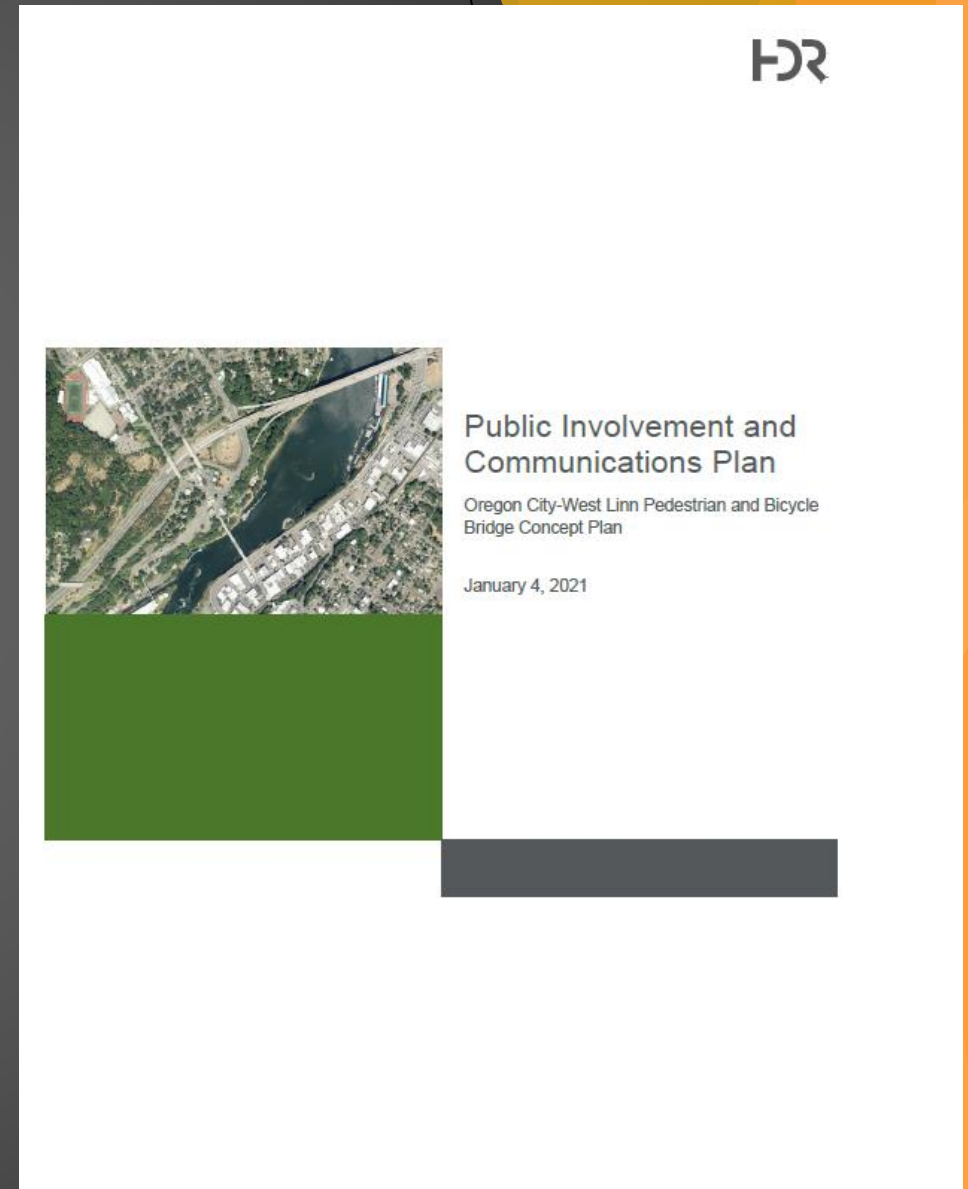
- ▶ Governments with Regulatory Authority
  - City of Oregon City
  - City of West Linn
  - Clackamas County
  - Metro
  - Oregon Department of Transportation
- ▶ Consultant Team
  - Kittelson & Associates
  - HDR
  - Concise Communication
  - PKS International
  - We All Rise, LLC

# Project Leadership Team

- ▶ Membership – Governments with Regulatory Authority
  - City of West Linn Councilor (Mary Baumgardner)
  - City of Oregon City Commissioner (Denyse McGriff)
  - Clackamas County Commissioner (Paul Savas)
  - Metro Council (Christine Lewis)
  - ODOT Region Manager or Area Manager (Rian Windsheimer)
- ▶ PLT representatives will attend PAC meetings
- ▶ PLT will have reserved sessions following PAC meetings

# Public Involvement and Communications Plan

- ▶ Topics covered in PICP:
  - PI program goals
  - Decision making/committees
  - Equity approach
  - Key messages
  - Engagement tools
  - Evaluation methods and measures



# Additional Stakeholder Engagement

- ▶ Website
- ▶ Fact Sheet
- ▶ Project Partner (Governments with Regulatory Authority) Coordination Meetings
- ▶ Stakeholder Interviews (up to 12)
- ▶ Walking Tour – February 2, 1:00 – 2:30PM
- ▶ Focus Group Work Sessions (up to 8) – by March
- ▶ Virtual Public Meeting and Open House – March & May

# Project Website Overview

Oregon City - West Linn Pedestrian and Bicycle Bridge Concept Plan Planning Phase

Region 1: Portland metro and Hood River County (Oregon City, West Linn, Clackamas)

The Concept Plan will identify a preferred alignment for a safer, more comfortable crossing for people biking and walking across the Willamette River between the communities of Oregon City and West Linn.



## Impacts

### Meetings and Events

#### Project Advisory Committee (PAC) Meetings

The committee will meet approximately three times, and the first meeting is scheduled for January 27 from 3:00 - 5:00 pm. Materials and a link to join the meeting will be available one week prior.

We are looking for two interested community members to serve on the PAC. If you are interested in serving on the committee, please fill out the [application](#) and return it by January 22, 2021.

#### Project Leadership Team Meetings

This group will attend the Project Advisory Committee meetings and hold supplemental meetings as needed.

### Schedule

November 2020 to June 2021

## Contacts & Media

### Project Contacts

#### Major Projects Planner

Sandra Hikari

Email

[sandra.y.hikari@odot.state.or.us](mailto:sandra.y.hikari@odot.state.or.us)

Phone

(503) 731-8246

#### Public Information Officer

Don Hamilton

Email

[don.hamilton@odot.state.or.us](mailto:don.hamilton@odot.state.or.us)

Phone

503-731-8265

Last Updated

▶ <https://www.oregon.gov/odot/projects/pages/project-details.aspx?project=OCWLPBBCP>



# Project Purpose & Need

- ▶ The purpose of the Concept Plan is to **identify and select a preferred bridge alignment** for people walking and biking across the Willamette River to connect the communities of Oregon City and West Linn, enhance safety, and improve regional connectivity.

# Project Purpose & Need

- ▶ The Concept Plan will:
  - Address Historic Arch Bridge deficiencies for people walking, biking, and rolling
  - Identify a new low-stress, comfortable, and designated connection for people walking, biking, and rolling
  - Connect existing and planned walking and biking networks
  - Enhance accessibility and the cultural experience of the historic Willamette Falls
  - Create opportunities for economic and community development
  - Mitigate environmental externalities

# Online Polling: Top Two Needs

- Address Historic Arch Bridge deficiencies for people walking, biking, and rolling
- Identify a new low-stress, comfortable, and designated connection for people walking, biking, and rolling
- Connect existing and planned walking and biking networks
- Enhance accessibility and the cultural experience of the historic Willamette Falls
- Create opportunities for economic and community development
- Mitigate environmental externalities

# Project Purpose & Need

- ▶ Confirmation and discussion

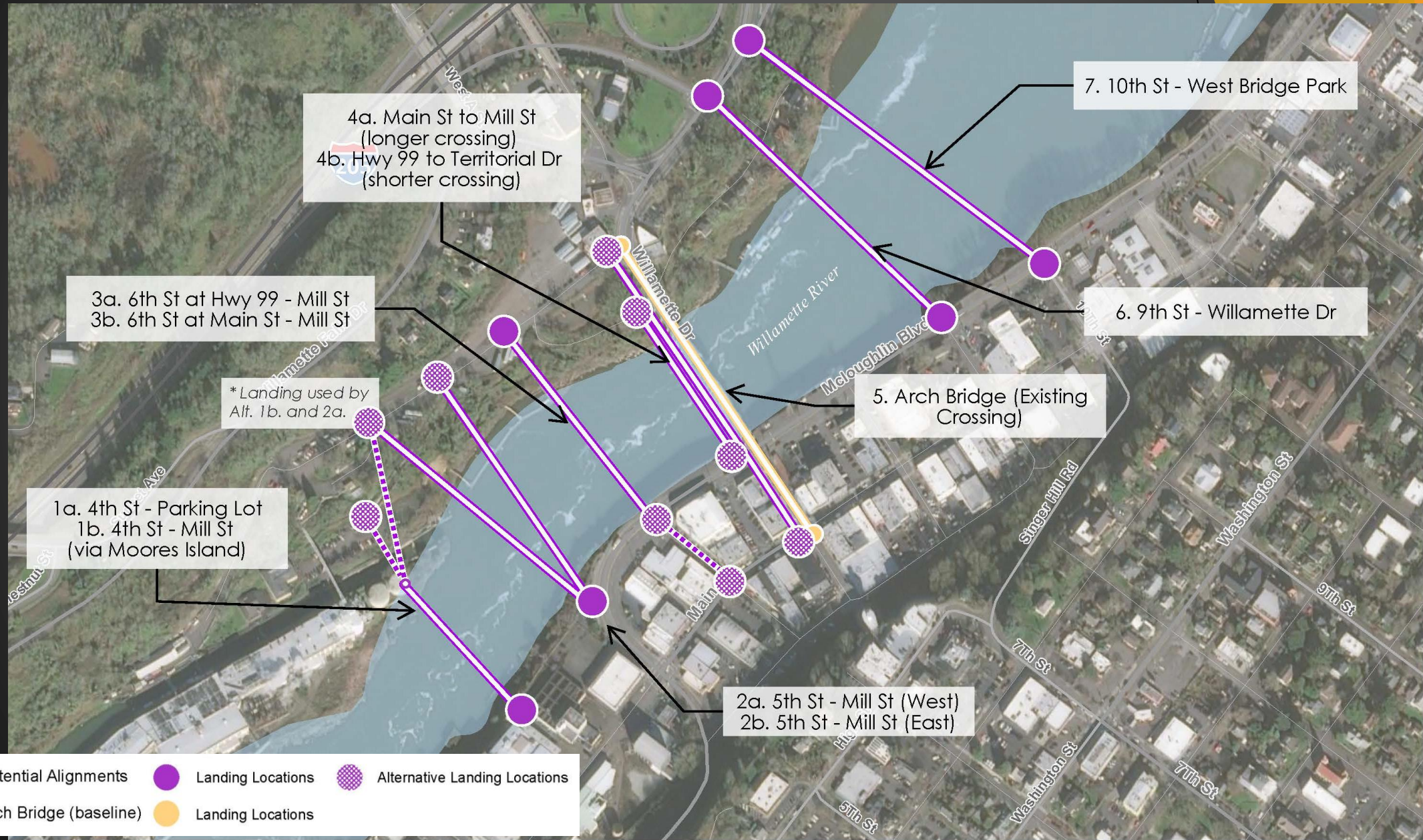
# Evaluation Criteria



# Initial Screening Criteria



# Potential Bridge Alignment Considerations

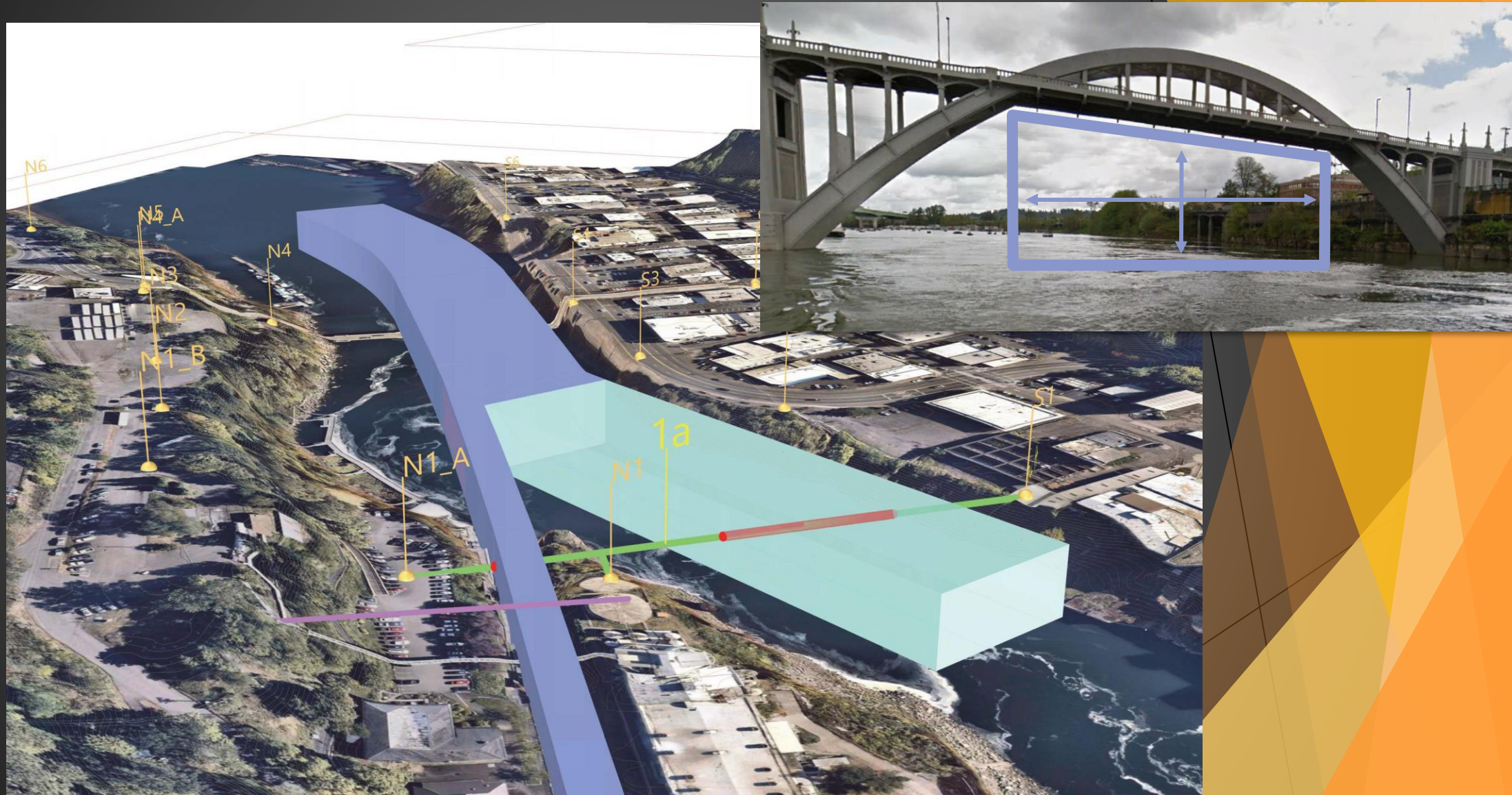


# Themes of PAC Input Received To-Date

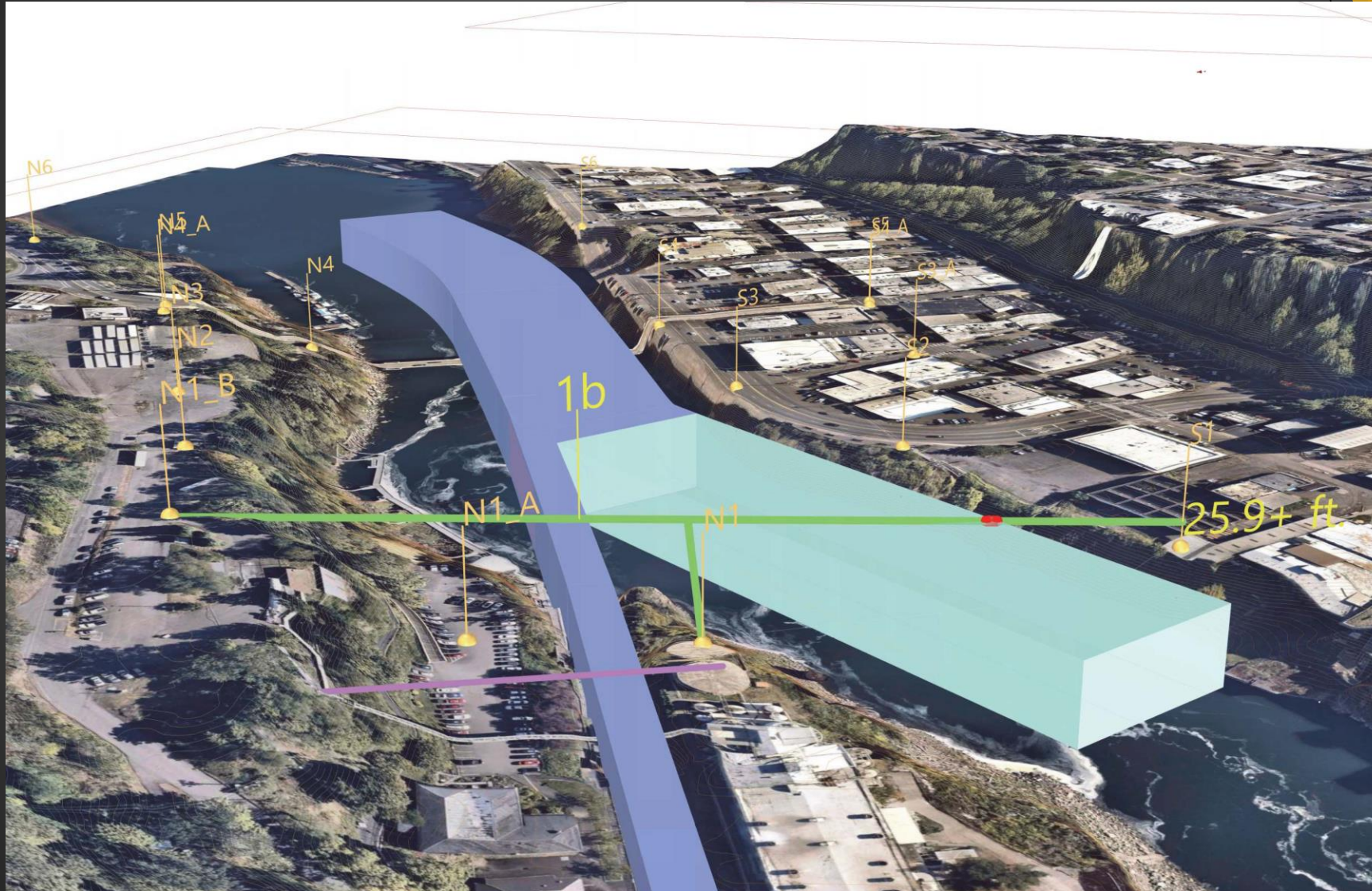
- ▶ Consider an alignment adjacent to the Arch Bridge, immediately north, to preserve historic views from the bridge to the Willamette Falls.
- ▶ Alignments that require a longer bridge, more piers in the Willamette River or add unnecessary complexity should be avoided.
- ▶ Views of the Arch Bridge from the Willamette Falls (upstream) have more significance compared to views downstream.
- ▶ The existing Arch Bridge does not provide access to people walking and biking.
- ▶ Alignments north of the Arch Bridge must be explored.



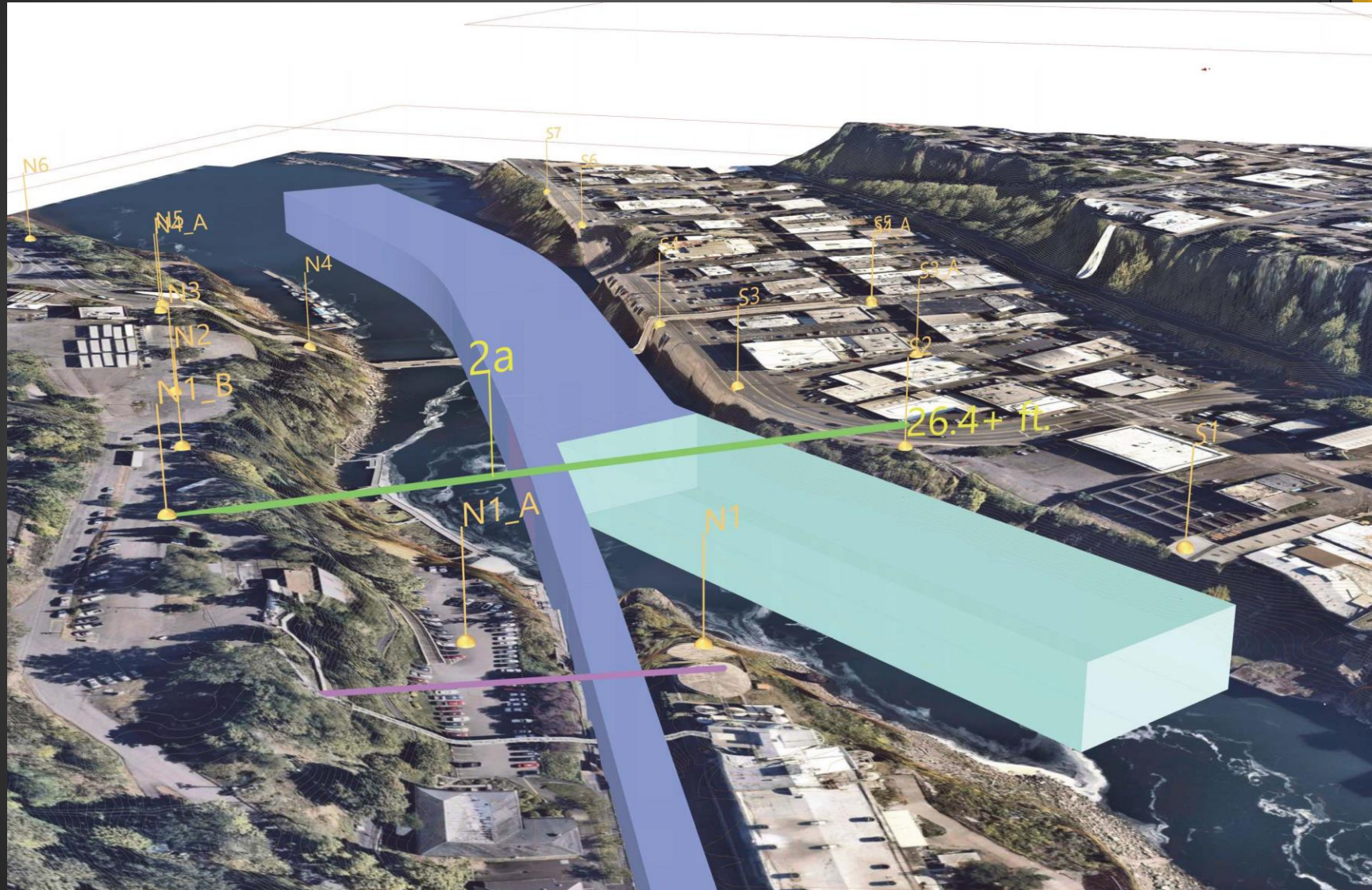
# Navigational Clearance



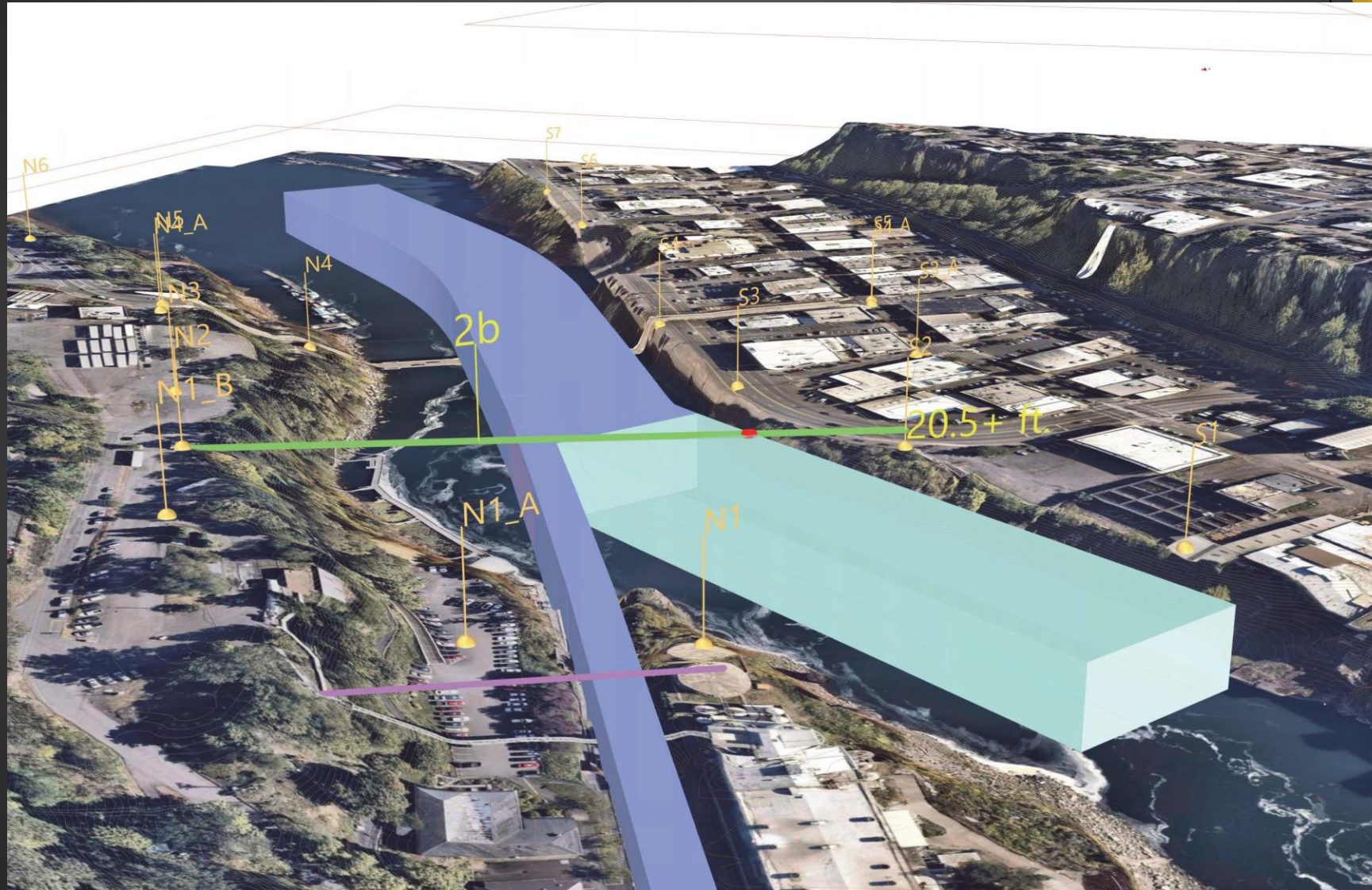
# Navigational Clearance



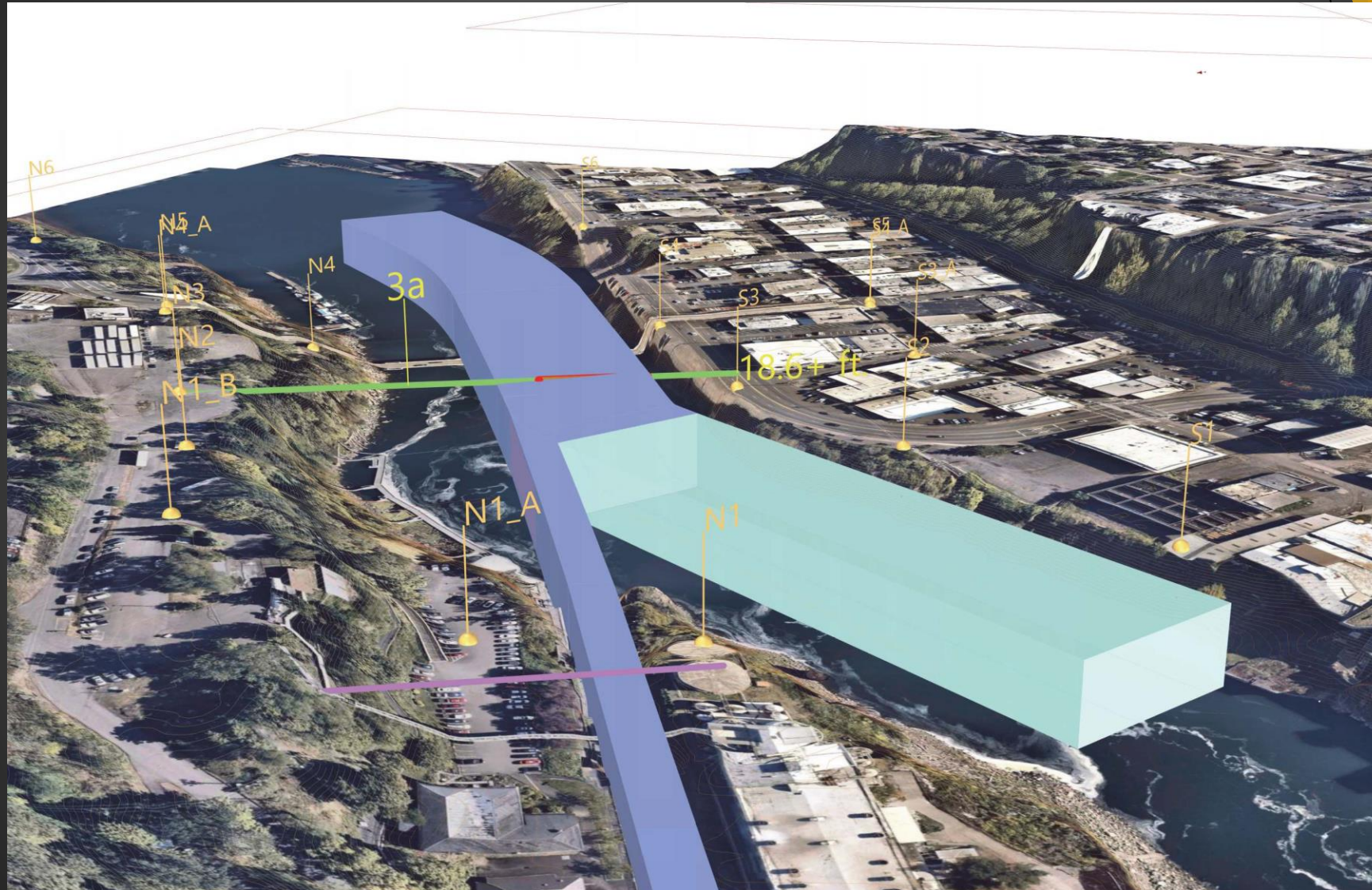
# Navigational Clearance



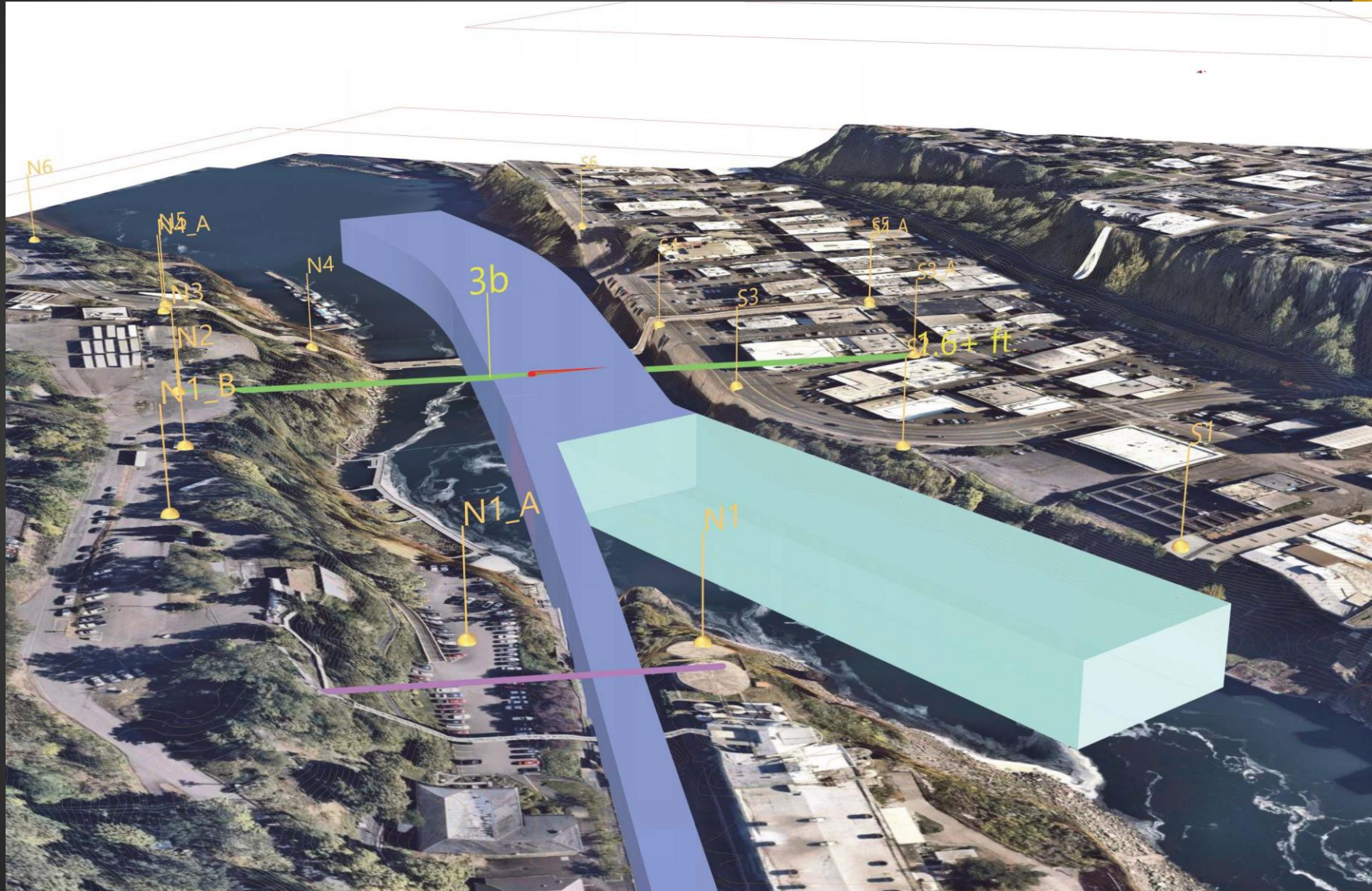
# Navigational Clearance



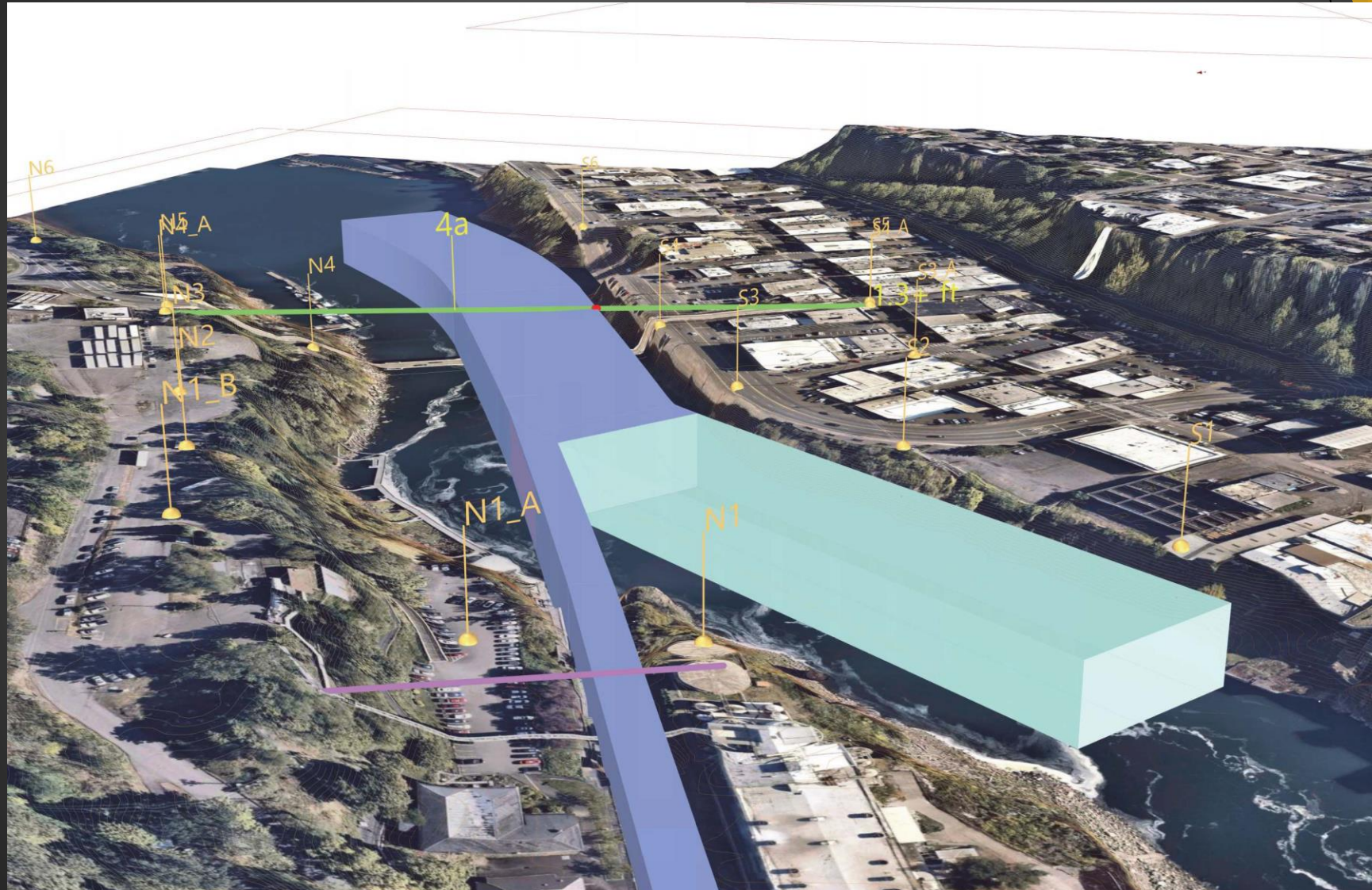
# Navigational Clearance



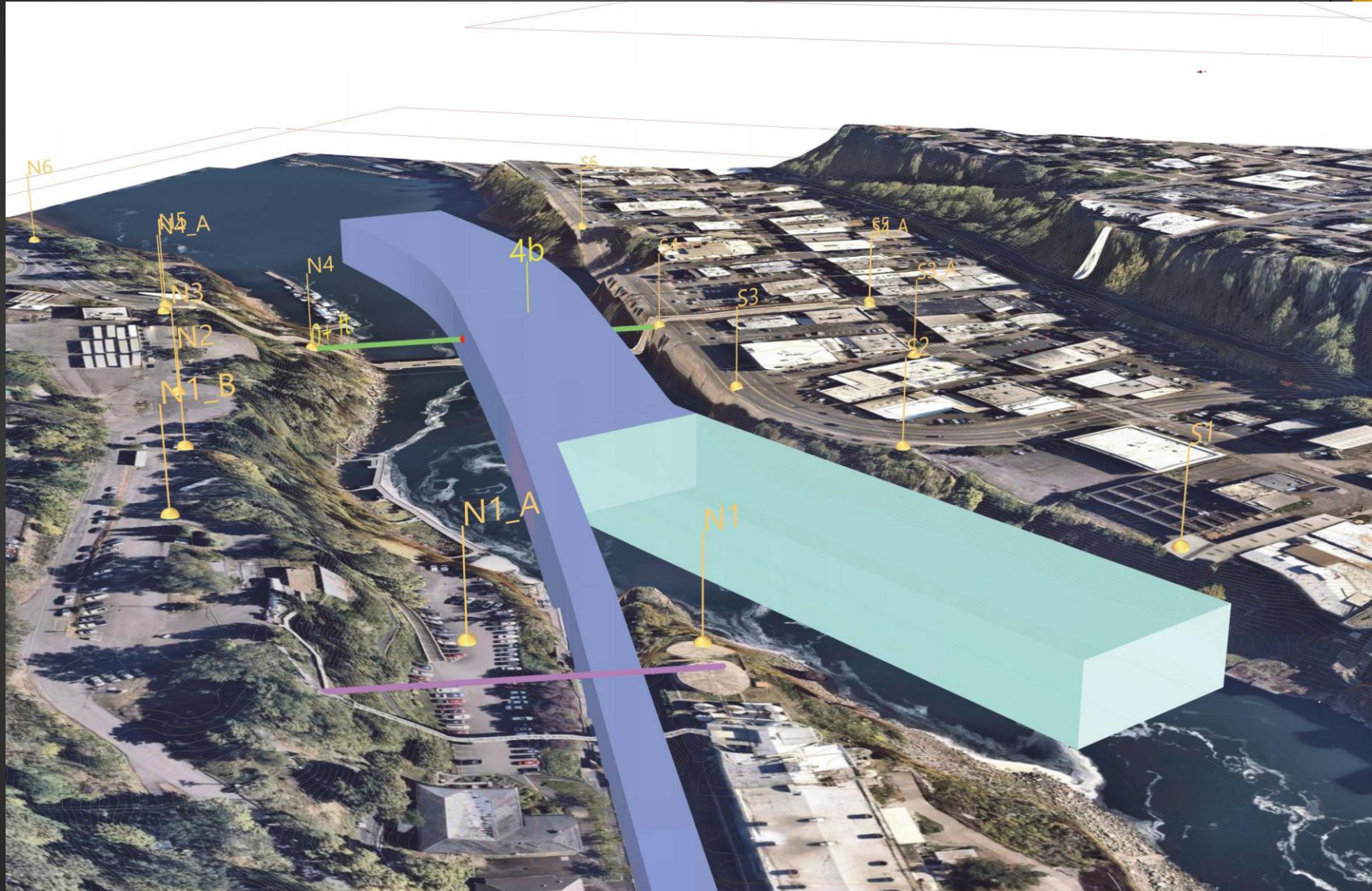
# Navigational Clearance



# Navigational Clearance

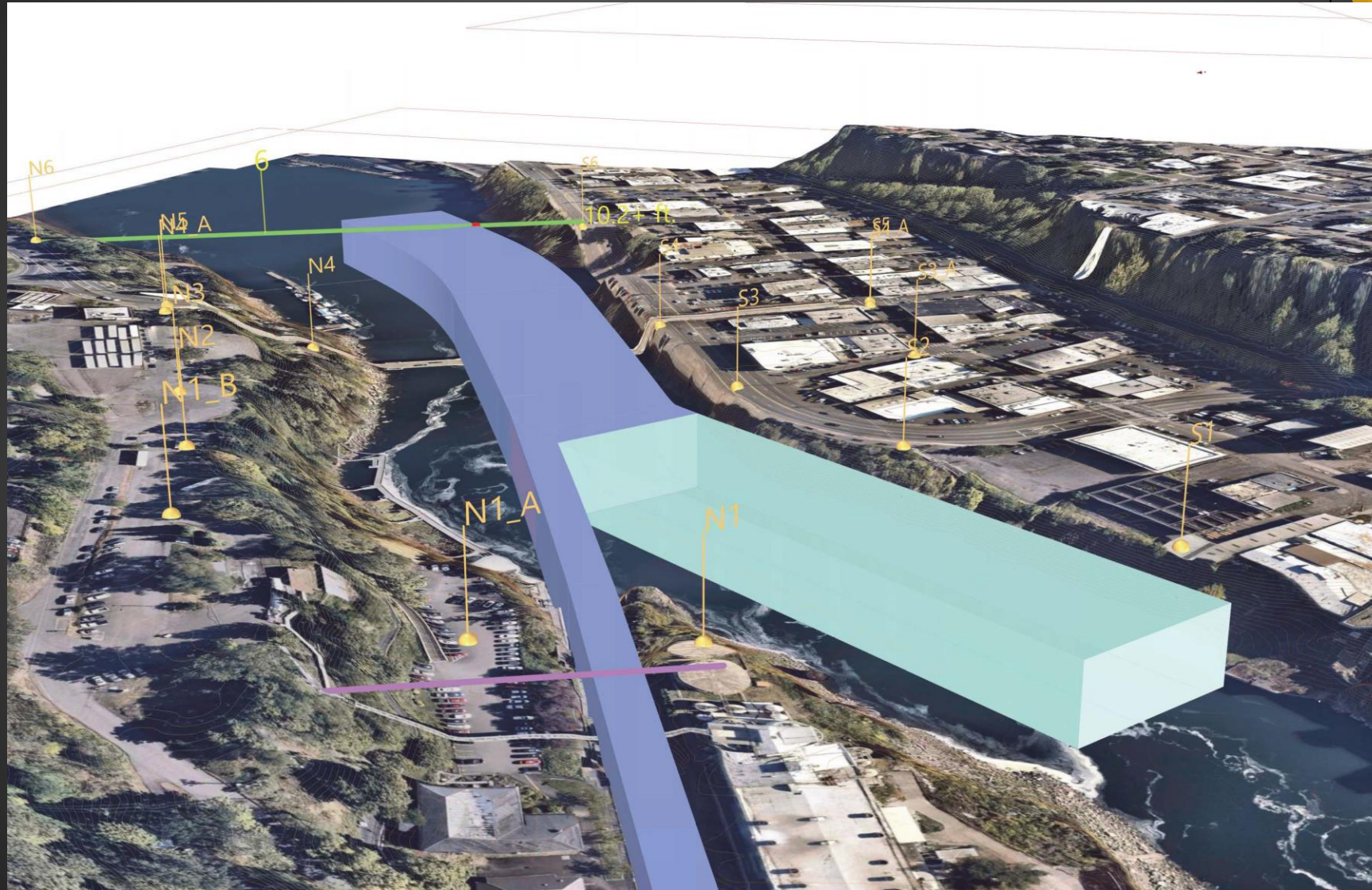


# Navigational Clearance

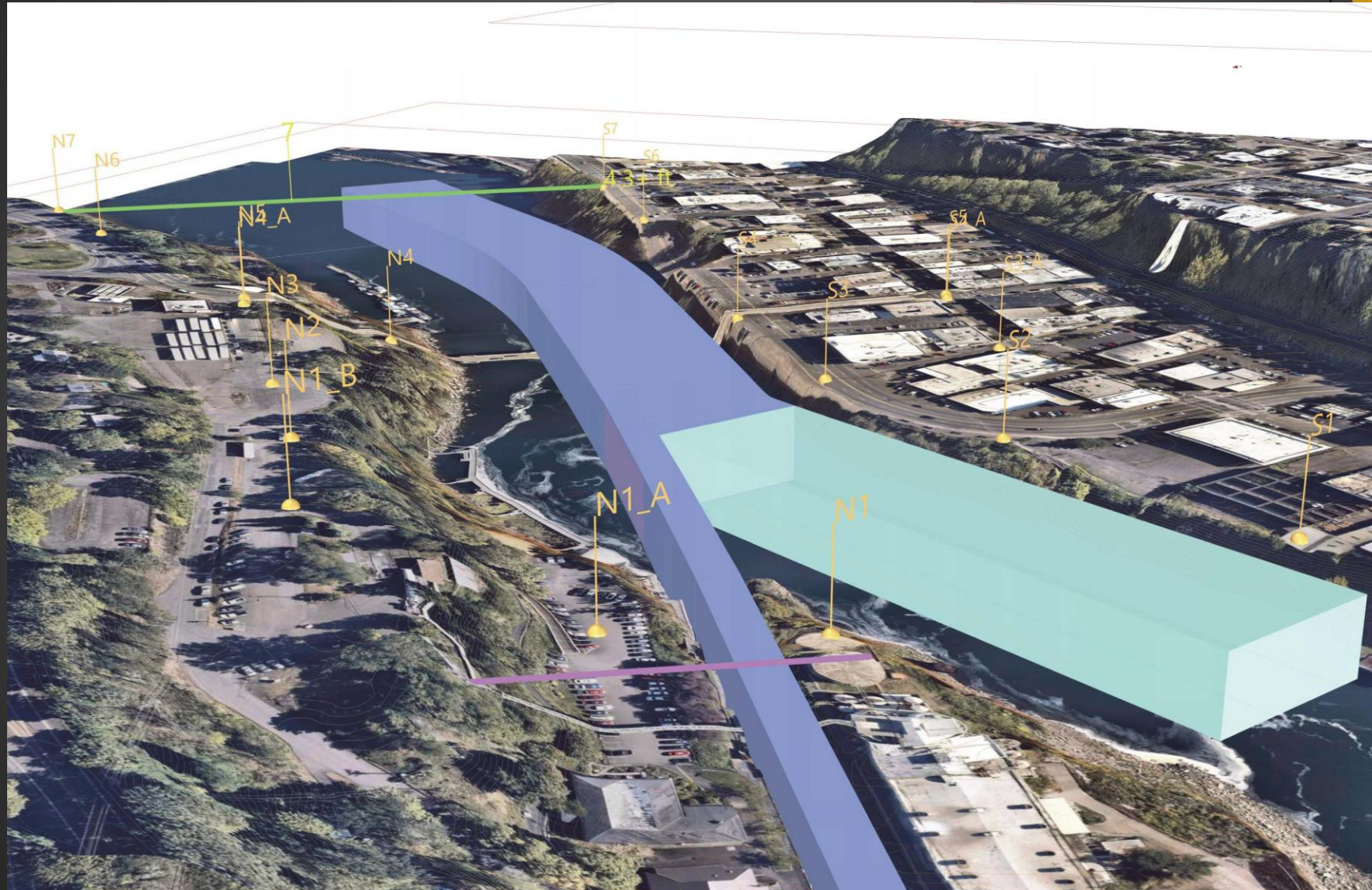




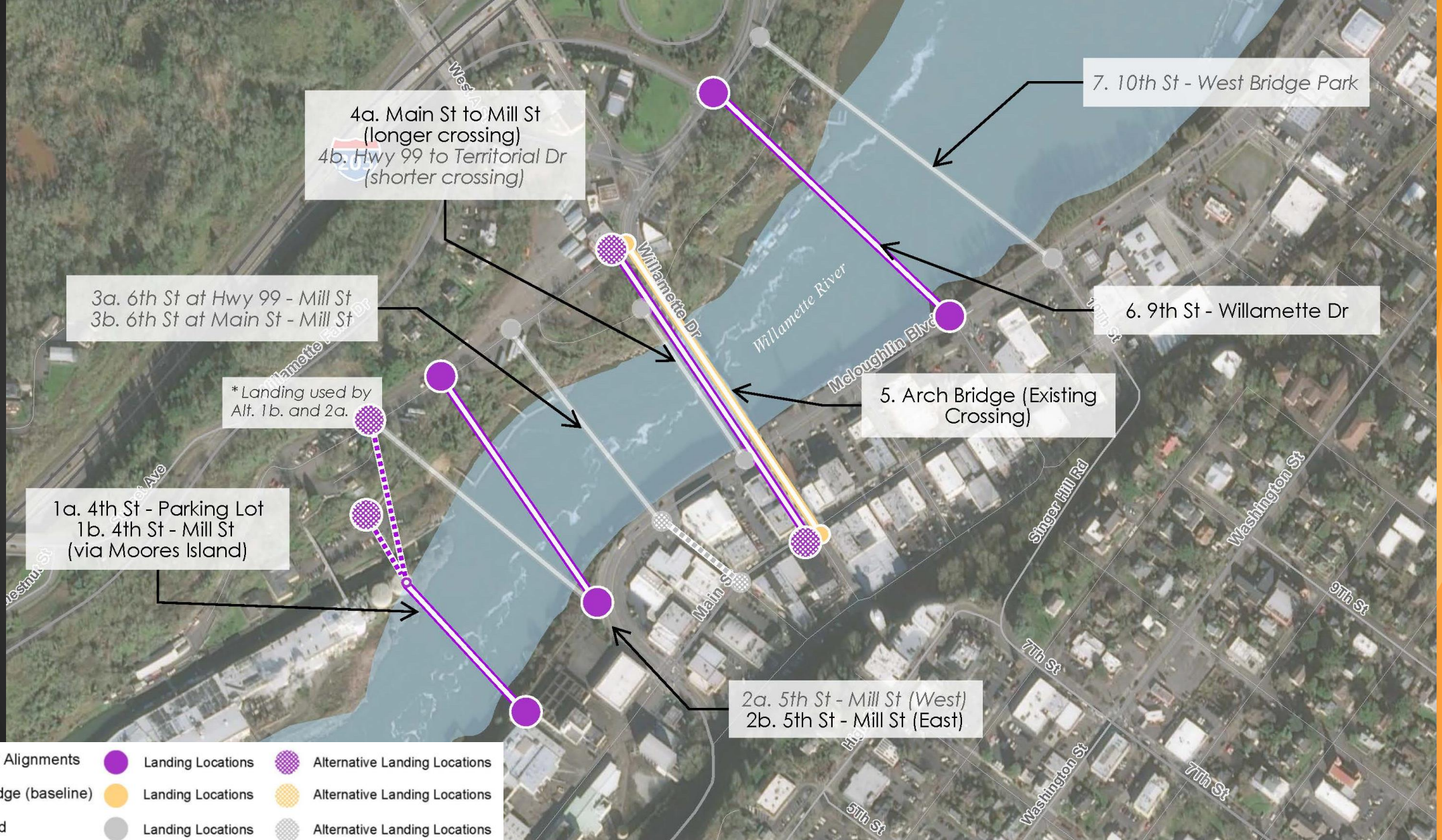
# Navigational Clearance



# Navigational Clearance



# Consultant Team Alignment Recommendations



- |  |                        |  |                   |  |                               |
|--|------------------------|--|-------------------|--|-------------------------------|
|  | Potential Alignments   |  | Landing Locations |  | Alternative Landing Locations |
|  | Arch Bridge (baseline) |  | Landing Locations |  | Alternative Landing Locations |
|  | Removed                |  | Landing Locations |  | Alternative Landing Locations |

# Breakout Exercise

- ▶ Which of two initial potential crossing alignments do you believe are most promising?
- ▶ Do you see any other potential crossing alignments that you believe could be equally or more promising?
- ▶ What areas within the study area do you believe would not make good locations for a crossing? Why not?
- ▶ Do you see benefits or burdens to having a new pedestrian/bicycle crossing within the study area?

# Top 2 Alignments for PMT Consideration

- ▶ Results from polling exercise

# Public Comment

# Next Steps and PAC Meeting #2 Objectives

- ▶ Walking Tour – Feb 2<sup>nd</sup>, 1:00 – 2:30 p.m.
- ▶ PMT to select Top 5 alignment alternatives to be advanced into refined evaluation – Feb 3<sup>rd</sup>
- ▶ Consultant Team to Prepare
  - TM 3a: Preliminary Bridge Concept Plans
  - TM 3b: Benefits and Impacts Analysis
  - TM 4: Active Transportation Analysis
- ▶ Next PAC #2 Meeting: March 31, 2021
  - Review Memorandum 3a, 3b, and 4
  - Discuss and Advise on Consultant Team's Most Promising Alternative Recommendations
  - Provide feedback and desired informational needs to advise PMT on a preferred alternative